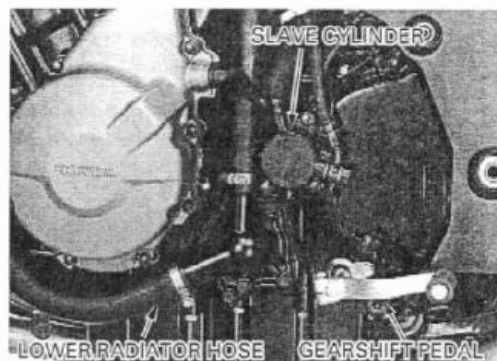


Disconnect the lower radiator hose from the water pump cover.

Remove the following:

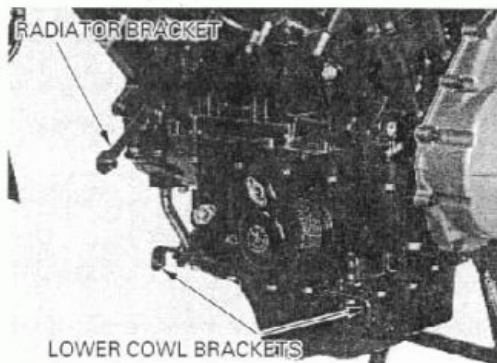
- Muffler/exhaust pipe (page 2-22)
- Oil pipes (page 4-13)
- Radiator (page 6-7)
- Clutch slave cylinder (page 9-10)

Remove the bolt and gearshift pedal.

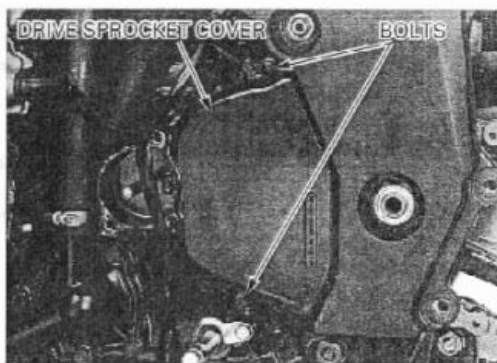


Remove the bolts and lower cowl brackets from the oil pan.

Remove the bolt and radiator lower bracket.



Remove the SH bolts, drive sprocket cover and guide plate.



Loosen the rear axle nut and make the drive chain slack fully.

Shift the transmission into 6th gear and apply rear brake.

Remove the bolt, washer and drive sprocket.

