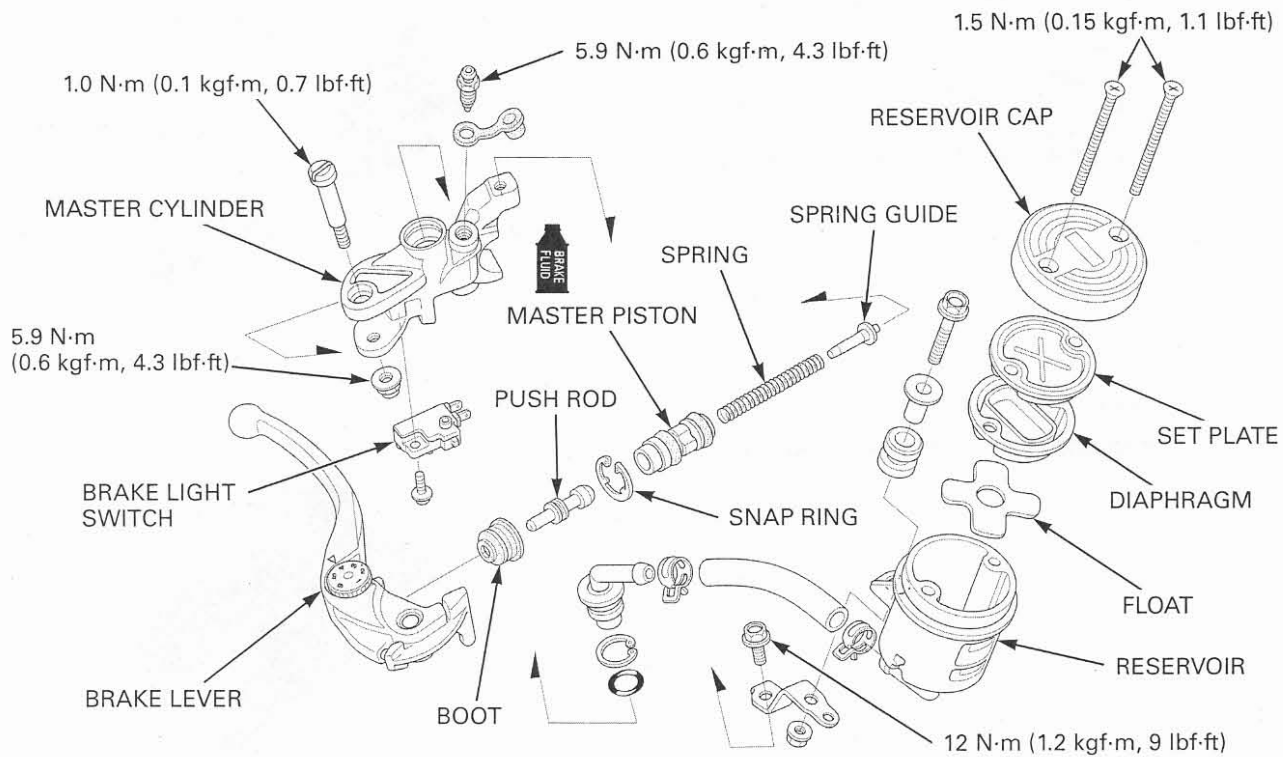


HYDRAULIC BRAKE

ASSEMBLY



- Keep the piston, cups, spring, snap ring and boot as a set; do not substitute individual parts.

Coat the master piston and piston cups with clean brake fluid.
Install the spring guide into the spring.

When installing the cups, do not allow the lips to turn inside out.

Install the spring guide/spring and master piston into the master cylinder.

Be certain the snap ring is firmly seated in the groove.

Install the snap ring with the special tool.

TOOL:
Snap ring pliers

07914-SA50001

