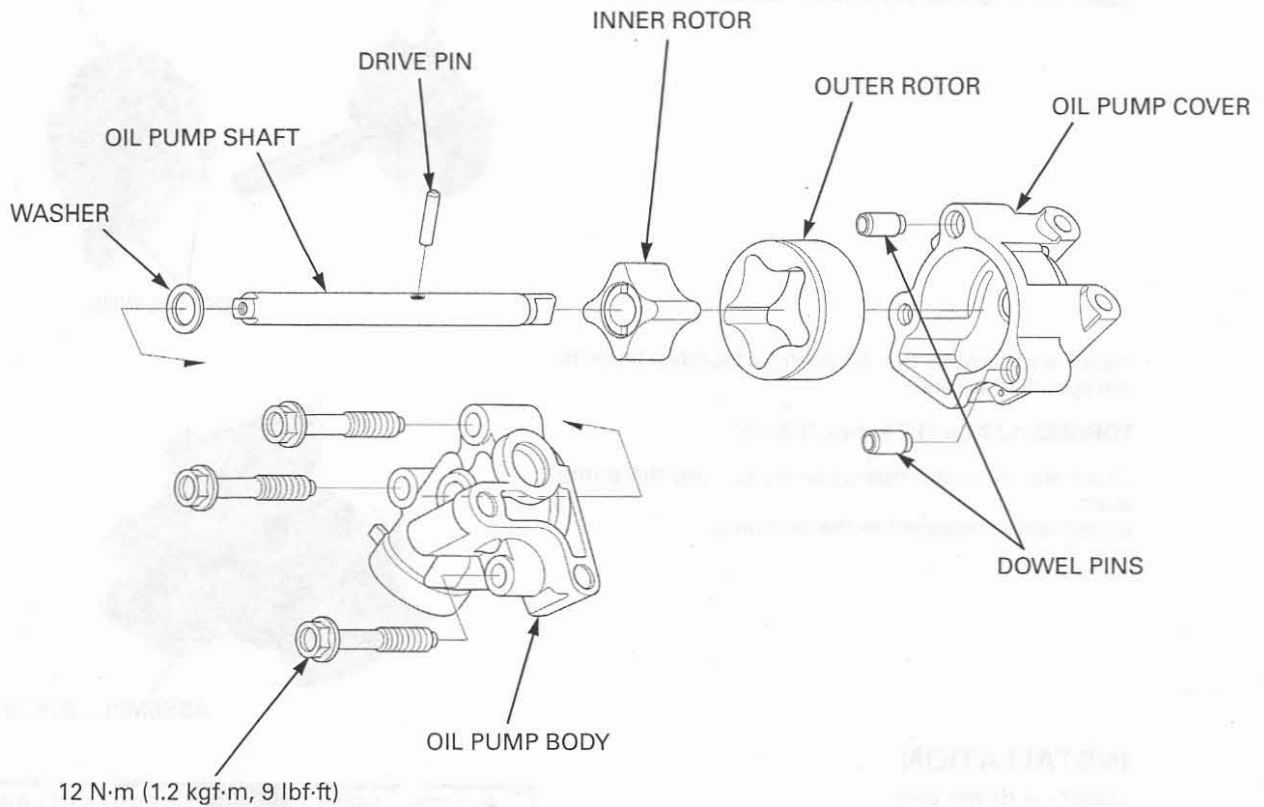
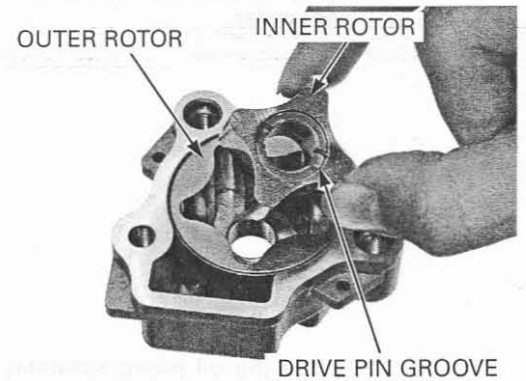


ASSEMBLY



Dip all parts in clean engine oil.
 Install the outer rotor into the oil pump body.
 Install the inner rotor into the outer rotor with its drive pin groove facing the oil pump cover.



Install the oil pump shaft through the inner rotor and oil pump body.
 Install the drive pin into the hole in the oil pump shaft and align the drive pin with the groove in the inner rotor.
 Install the thrust washer.

