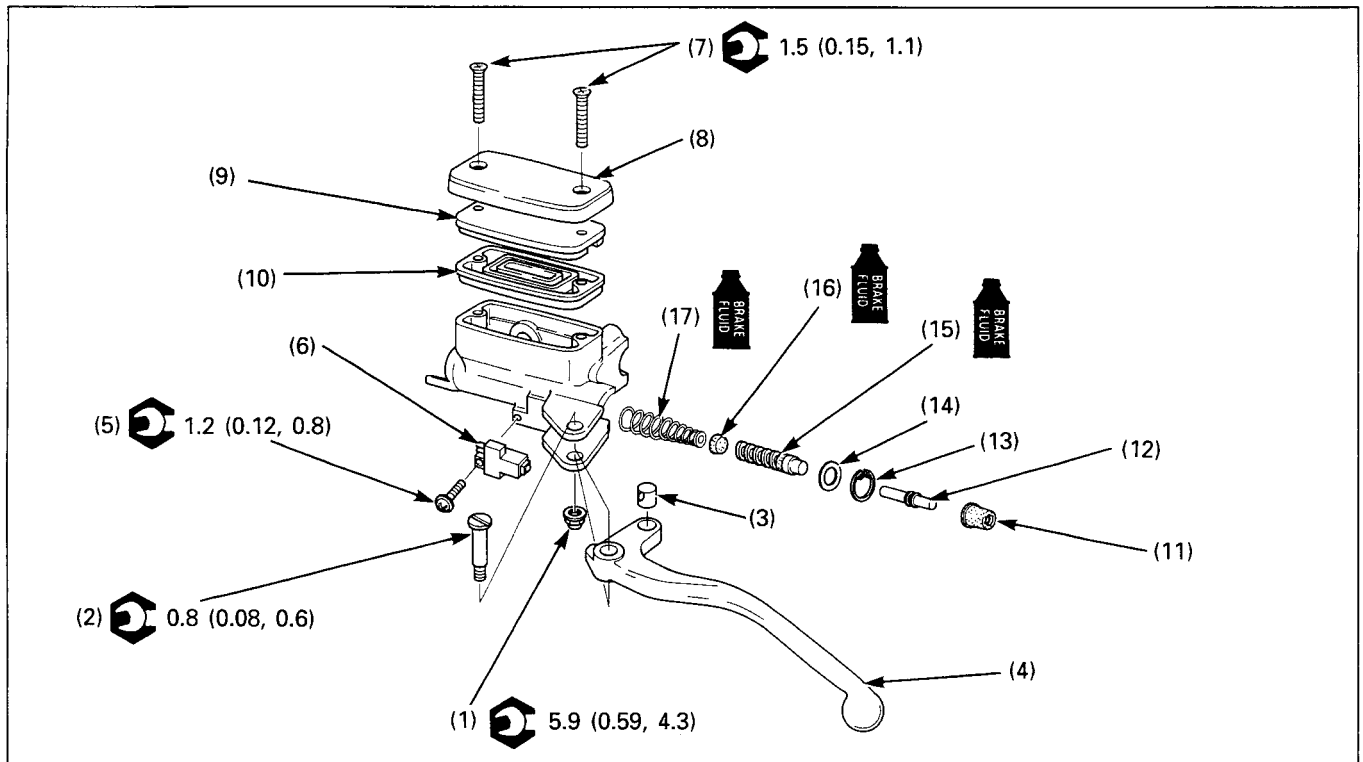


Clutch Master Cylinder Disassembly/Assembly



NOTE

- Replace the master piston, spring, cups, snap ring and boot as a set.
- The master piston, cups and spring must be installed as a set.

Requisite Service

- Clutch master cylinder removal/installation (page 9-4)

Procedure	O'ty	Remarks
Disassembly Order		Assembly is in the reverse order of disassembly.
(1) Clutch lever pivot nut	1	
(2) Clutch lever pivot bolt	1	
(3) Joint piece	1	
(4) Clutch lever	1	
(5) Clutch switch screw	1	
(6) Clutch switch	1	
(7) Master cylinder cover screw	2	
(8) Master cylinder cover	1	
(9) Diaphragm plate	1	
(10) Diaphragm	1	
(11) Boot	1	
(12) Push rod	1	
(13) Snap ring	1	
(14) Washer	1	
(15) Master piston assembly	1	
(16) Primary cup	1	
(17) Spring	1	Install the spring with the small coil end facing the piston.