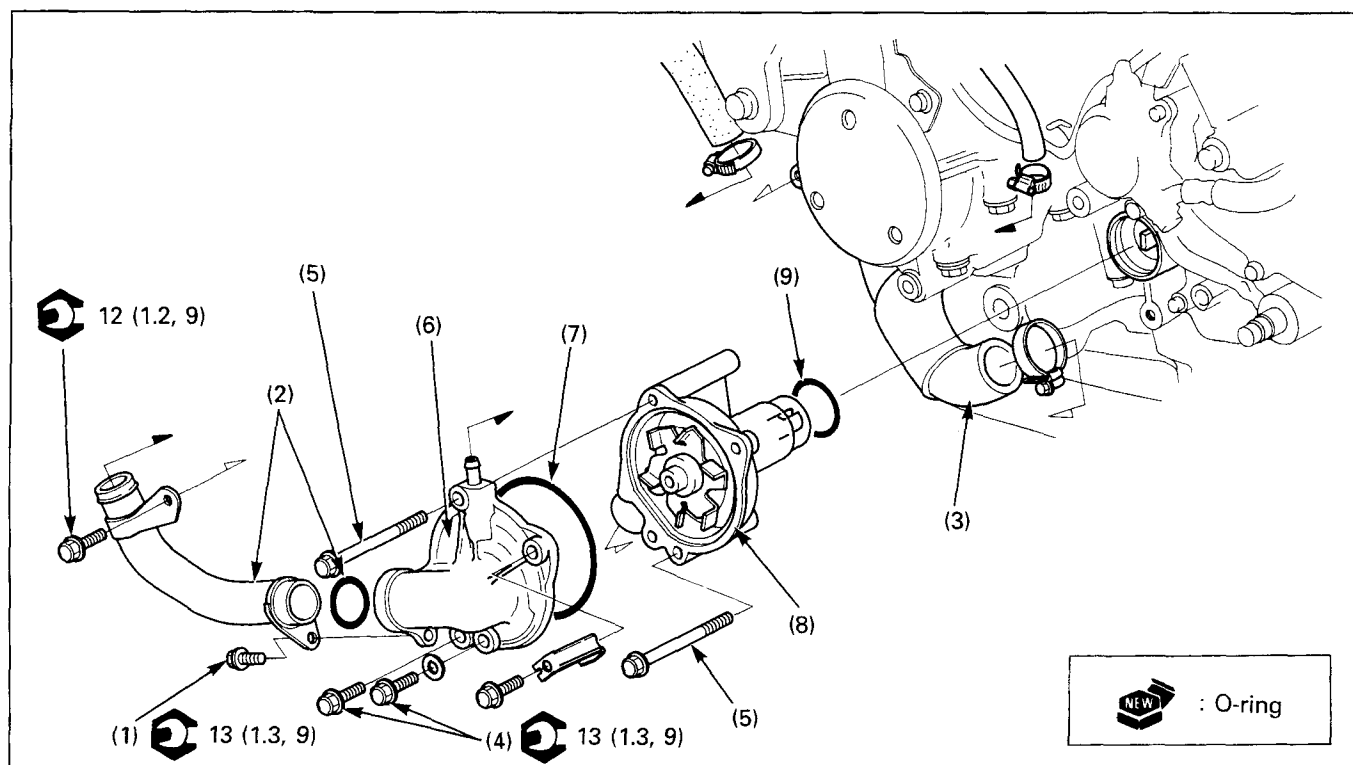


## Water Pump Removal/Installation



### Requisite Service

- Coolant draining/refilling
- Engine oil draining
- Gearshift spindle joint removal/installation (7-2)

Procedure	Q'ty	Remarks
<b>Removal Order</b>		Installation is in the reverse order of removal.
(1) Water pump-to-radiator pipe bolt	2	
(2) Water pump-to-radiator pipe/O-ring	1/1	
(3) Water pump-to-cylinder head hose	1	
(4) Water pump cover bolt/clamp	2/1	
(5) Water pump mounting bolt	2	
(6) Water pump cover	1	
(7) O-ring	1	
(8) Water pump body	1	At installation, align the cut-out of the water pump shaft with the oil pump shaft.
(9) O-ring	1	