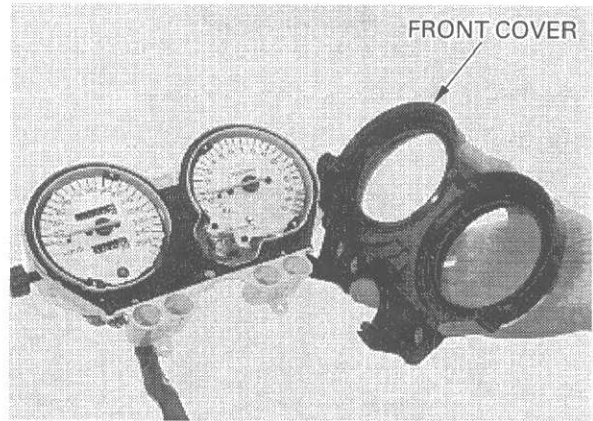
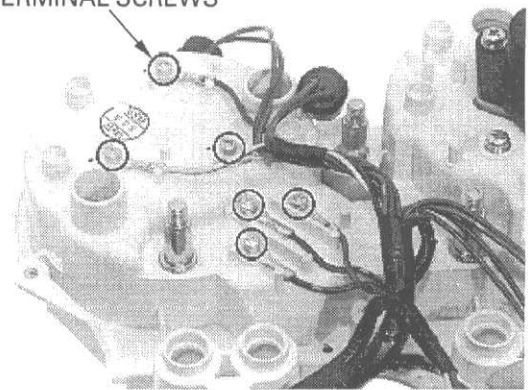


Remove the front cover from the combination meter case.



Remove the six terminal screws and tachometer/indicator unit.

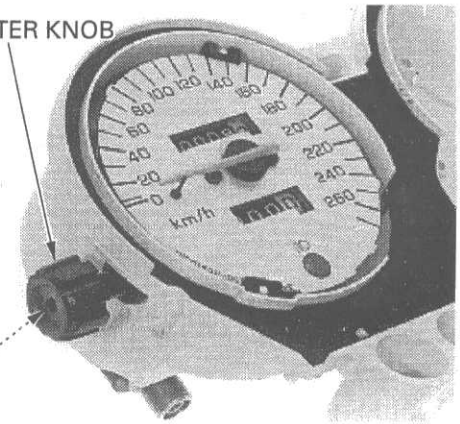
TERMINAL SCREWS



Remove the screw and trip meter knob.

TRIP METER KNOB

SCREW



Remove the two speedometer gearbox screw, then remove the speedometer unit.

SPEEDOMETER GEARBOX

SCREWS

