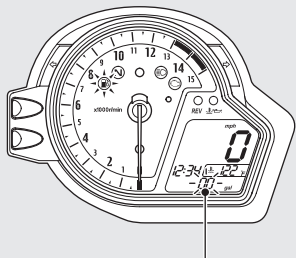


## Indicators *(Continued)*

### Low fuel indicator and reserve fuel consumption display

When this indicator comes on, the lower segment of the multi-function display switches to the reserve fuel consumption. You should refill the tank as soon as possible.



Reserve fuel consumption display

- Flashes from 0.0 “gal (gallon)” or “l (liter)”.
  - ▶ When the amount of consumed fuel is more than 0.26 US gal (1.0 liter) the display blinks faster.
  - ▶ If you change the display to odometer, tripmeter and so on (➤P.21, 22), it will automatically return to the reserve fuel consumption display if the buttons are not pressed for about 10 seconds.

After refueling more than the reserve amount, the display returns to normal when the ignition switch has been ON for about a minute.