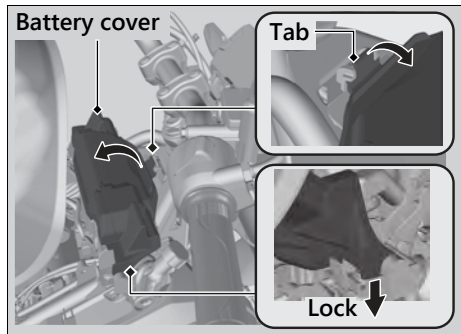
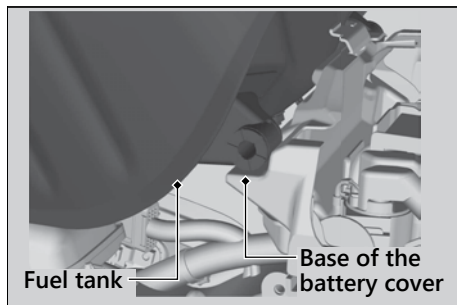


6. Pull the tab of the battery cover and open it.
► After the battery cover is opened, push down the hinge part to lock it.



7. Mount the fuel tank on the base of the battery cover.



Installation

1. Install the fuel tank in the reverse order of removal.
2. Install the collars and mounting bolts.
3. Tighten the mounting bolts.

Torque: 9 lbf-ft (12 N·m, 1.2 kgf·m)