

Initial Display

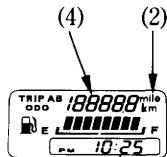
When the ignition switch is turned ON, the display will temporarily show all the modes and digital segments so you can make sure the liquid crystal display is functioning properly.

(Except digital clock)

The unit “mph” (1) and “mile” (2) will be displayed only for E type.

And only the selected unit of either “km/h”, “km” or “mph”, “mile” will be indicated.

Digital clock (3) and tripmeter (4) will reset if the battery is disconnected.



(3)

- (1) “mph”
- (2) “mile”
- (3) Digital clock
- (4) Tripmeter