

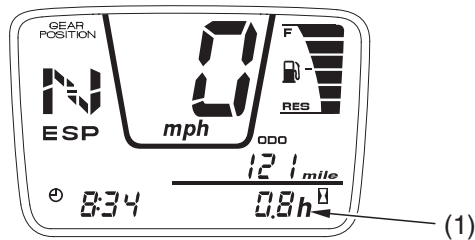


# Indicators & Displays

## Hourmeter

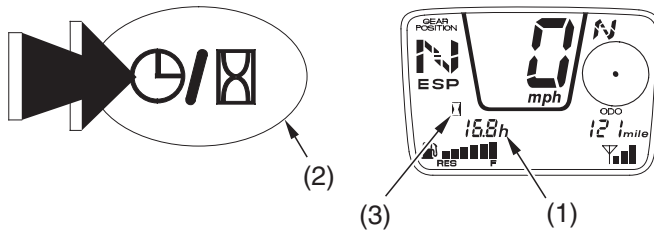
(For TRX500FA)

The hourmeter (1) shows accumulated hours while the ignition is ON (1). The hourmeter provides accurate service period information for initial and regular maintenance.



(For TRX500FGA/FPA)

To change the display from the digital clock to the hourmeter, press and release the digital clock/hourmeter select button (2). The hourmeter mark (3) will appear.



- (1) hourmeter
- (2) digital clock/hourmeter select button

- (3) hourmeter mark

